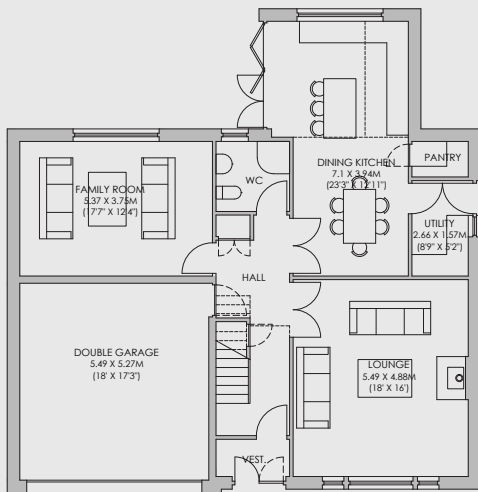


The Cairnie

4 bedroom

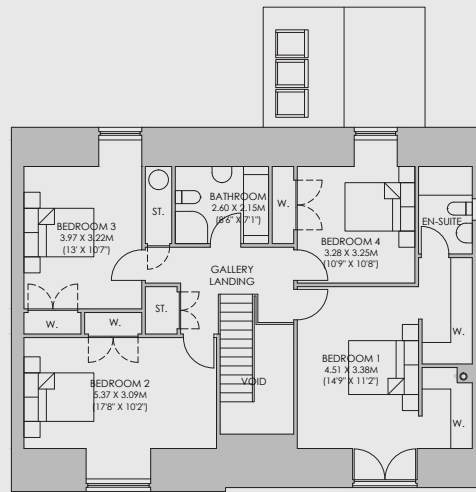


4 BEDROOM - STOREY & HALF
194.8 SQM (2,097 SQ.FT)

GROUND
99.6 SQM (1,072 SQ.FT)

FIRST
95.2 SQM (1,025 SQ.FT)

LOUNGE 5.49 X 4.88M (18' X 16')
DINING/ KITCHEN 7.10 X 3.94M (23'3" X 12'11")
FAMILY ROOM 3.37 X 3.75M (11'7" X 12'4")
UTILITY 2.66 X 1.57M (8'9" X 5'2")
SHOWER ROOM 2.05 X 1.95M (6'9" X 6'5")



4 BEDROOM - STOREY & HALF
194.8 SQM (2,097 SQ.FT)

BEDROOM 1 4.51 X 3.38M (14'9" X 11'2")
BEDROOM 2 5.37 X 3.09M (17'8" X 10'2")
BEDROOM 3 3.97 X 3.22M (13' X 10'7")
BEDROOM 4 3.28 X 3.25M (10'9" X 10'8")
BATHROOM 2.60 X 1.50M (8'6" X 7'11")
EN-SUITE 2.44 X 1.50M (8' X 5')