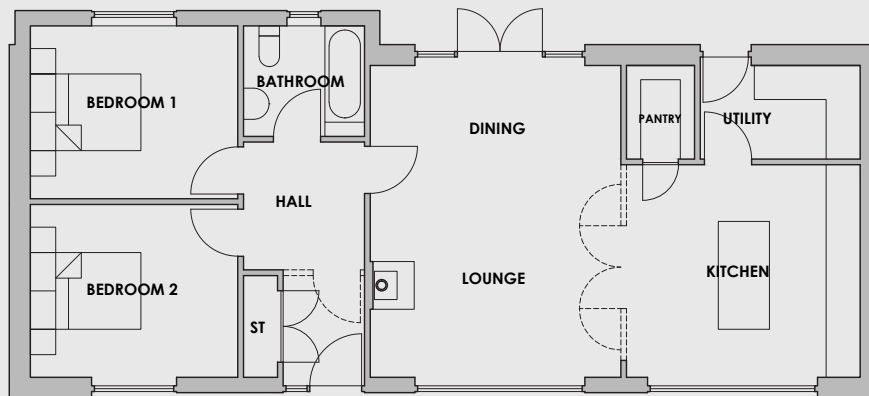


The Lomond

2 bedroom



2 BEDROOM SINGLE STOREY
84.6 SQM (910 SQ.FT)

LOUNGE/ DINING	5.50 X 4.42M (18' X 14'6")
KITCHEN	4.12 X 3.75M (13'6" X 12'4")
BEDROOM 1	3.66 X 3.05M (12' X 10')
BEDROOM 2	3.66 X 3.05M (12' X 10')
BATHROOM	2.13 X 1.95M (7' X 6'5")
HALL	2.25 X 2.13M (7'5" X 7')
UTILITY	2.82 X 1.65M (9'3" X 5'5")

SIPs Scotland
by **THCL**